

Shapes Phoenix

The Phoenix is a modular structure which is perfect for creating outdoor covered spaces with a completely different feel. It is a freestanding enclosed canopy which is perfect for outdoor events.



Suggested applications

- ▶ Walkway
- ▶ Entertainment
- ▶ Sunshade
- ▶ Enclosed

Size options

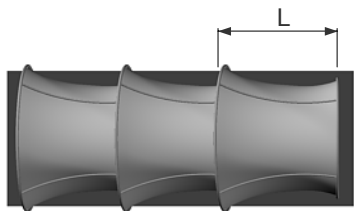
L square: 3m, 4m, 5m x bays

Canopy features

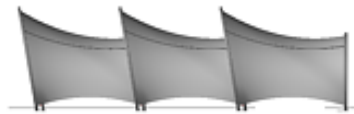
- ✔ Walkway feature
- ✔ Freestanding enclosed canopy
- ✔ Outdoor events

Range-wide features

- ✔ Range of sizes and fabrics
- ✔ Striking and unique designs
- ✔ Great for branding
- ✔ Easy to install and easy to re-use
- ✔ Modular components
- ✔ Easy to transport
- ✔ Fabrics printed to your design



Plan view



Side view



Front view

Fabric options

Coated Polyester



White



Printed

Blackout Coated Polyester option

Other fabrics available on request